

SELF WEATHERING STEEL



A-588 STEEL

WEATHERING STEEL

"Weathering steel" is a group of steel alloys developed to eliminate the need for painting. A stable rusted appearance is achieved after months/years of oxidation. While surface oxidation of weathering steel can take upwards of six months, treatments can accelerate this process. DURARUST is our self-weathering version of DURAEDGE. It's weathered surface protects deeper penetration when left exposed, increasing its resistance to atmospheric corrosion when compared with other steels. The rust finish is a popular alternative to painted edge installations for an industrial or more rustic appearance, or when edging is sought to recede within its natural surroundings.

A-588 STEEL
 steel exhibits superior corrosion resistance over regular carbon steel as a result of the development of a protective oxide film on the metals surface which slows down further corrosion.

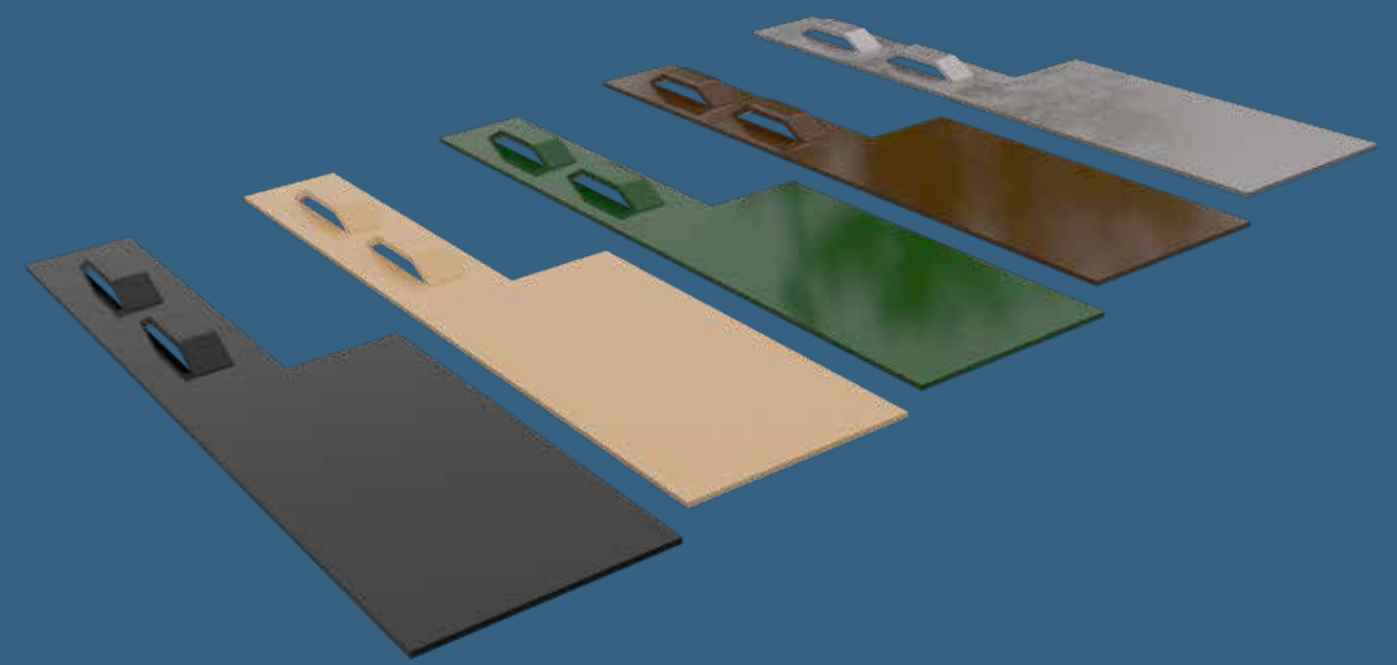
Available in:
 14 Gauge, 12 Gauge, 1/8", 3/16" or 1/4" in lengths of 8', 10' and 16'

Custom Sizes /
 Custom Layouts Available



CHANNEL YOUR CREATIVITY

WHO SAID EDGING CANT BE COLORFUL?



DURAEDGE STANDARD FINISHES



CUSTOM COLORS

If you are looking for a more custom look, Duraedge is available in almost any custom color. Support your favorite sports team, show your college spirit or match your company's color scheme. Contact us today about your custom color options.



(800) 888-7425
 contact@jdrussellco.com
 jdrussellco.com

jdrussellco.com
 Facebook
 Twitter
 /TheJDRussellCo



-with-
SHOT BLAST PREP

STEEL LANDSCAPE EDGING

PROUDLY MADE IN THE U.S.A.



INFERIOR PREPARATION




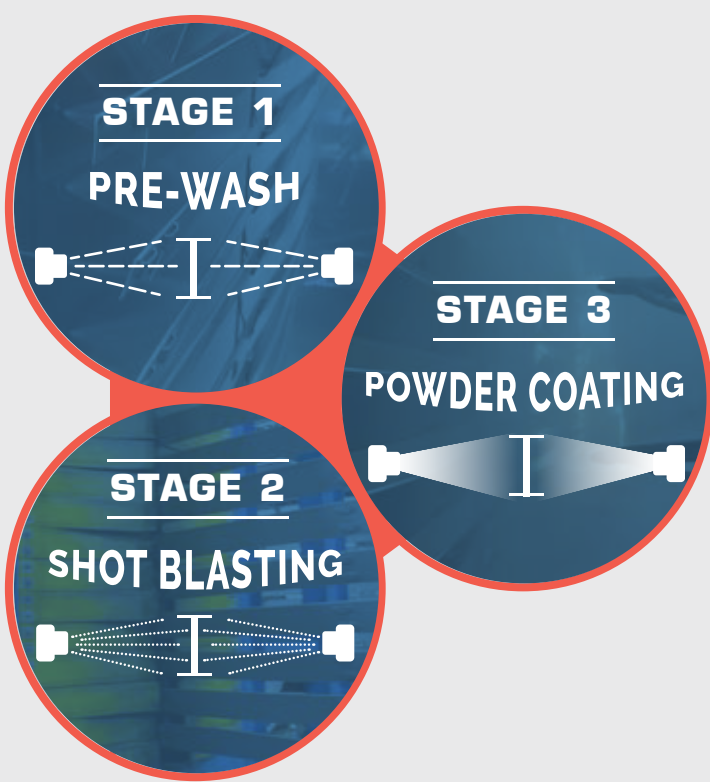
RUST & PAINT DELAMINATION

is an all-too-common occurrence on steel edging. It is aesthetically displeasing and affects the integrity of your landscape installations. Conventional methods of pre-washing and powder coating the steel does little to eliminate rust and scale. These and other contaminants prevent paint finish from adhering properly resulting in delamination and rusting.

THE J D RUSSELL COMPANY USES AN EXCLUSIVE 3 STAGE COATING PROCESS.

The finish on our edging outlasts other's because of our exclusive steel preparation and powder coat processes.

 REPLACEMENT OF DEFECTIVE EDGING ADDS TIME AND EXPENSE TO JOBS AS WELL AS CUSTOMER DISSATISFACTION



STAGE 1 • PRE-WASH

After the raw steel is made into punched edging, it's treated with a detergent pre-wash. This wash removes oils, grease and hard to see contaminants from handling and readies the steel for stage 2 - **Shot Blasting**.



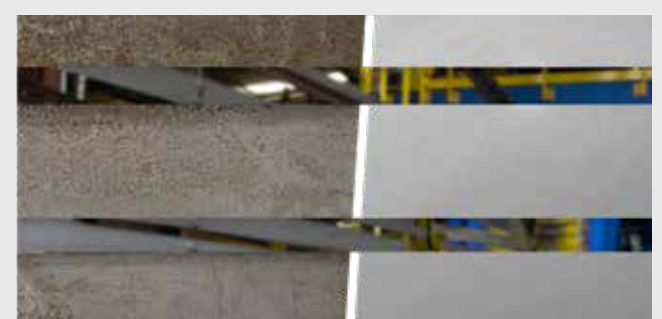
RUSTED MATERIAL ENTERING SHOT BLASTER



DE-SCALED AND READY FOR POWDER COAT

STAGE 2 • SHOT BLAST

Shot blasting is a mechanical method of propelling abrasive material using a centrifugal wheel to remove surface contamination, scale and other impurities from steel prior to powder coating. The J D Russell Company is the first and only landscape edging manufacturer in the nation to use the Blastec shot blast system prior to powder coating.



STAGE 3 • POWDER COATING

After being completely cleaned and shot blasted, the edging is coated with a high quality TGIC durable powder coating that is compliant to ASTM standards. It is then baked to a highly durable finish. This coating protects the steel from rust and corrosion caused by humidity, salt spray or sunlight insuring longevity and a high end look for many years to come.



COATED AND CURED



- SALT SPRAY**
ASTM B117-1000 hours -PASS
- HUMIDITY**
ASTM D2247-1000 hours -PASS
- ADHESION (Crosshatch)**
ASTM D3359-5B



PACKAGED & READY FOR DELIVERY

After the edging is powder coated, it is package in specially designed pallets that ensure our edging arrives to the job site undamaged and ready to install.